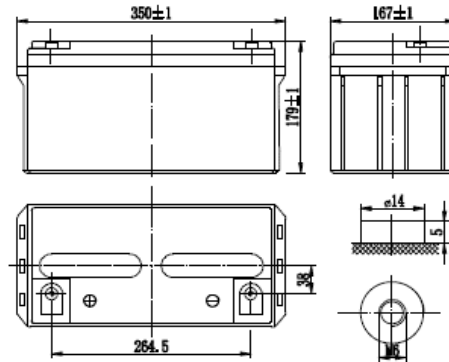


Rated voltage: 12 V **Capacity:** 80Ah C₁₀ at 25°C to 1.80V per cell

- * Designed service life of 10 years
- * World-wide compatibility
- * Easy maintenance with low operation cost
- * Easy installing and parameters readings
- * Wide operation temperature range
- * Superior low current discharge performance
- * Better safety performance and reliability
- * Modular and installation design
- * Environmental friendly

Size: 350x167x179mm

Weight: 24kg



Application:

Telecommunication
UPS
Solar and wind power system
Electric power, nuclear power
Marine

Company Certificates

ISO 9001:2009
ISO 14001:2005
OHSAS 18001:2008



Technical details

Max discharge current:	750A (5sec)	Self-discharge:	less than 9% / 90 days @ 25°C
Internal resistance (charged):	5,5mΩ @ 25°C	Max charge current:	24A
Temperature range		Charge voltage at 20°C	Float: 2.26-2.30V Cycle: 2.40-2.45V
Application temperature:	-20°C ~ 60°C	Terminal output:	M6
Storage:	-20°C ~ 60°C	Container	ABS
Charge:	-10°C ~ 50°C		
Temperature compens.factor:	30 mV/°C		

Temperature effect on battery capacity: 105 % @ 40°C; 85 % @ 0°C; 60 % @ -20°C

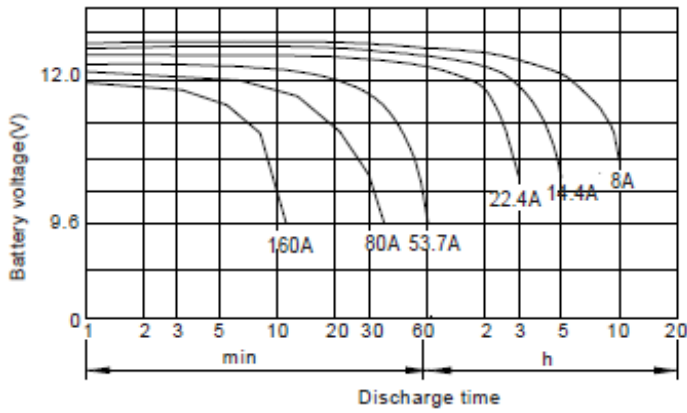
Discharge current (A/25°C, 68°F):

End Voltage	5min	10min	15min	30min	1h	3h	5h	10h	24h
1,60	247	188	149,0	87,3	53,7	22,7	15,0	8,20	3,72
1,65	233	178	137,0	83,0	51,6	22,5	14,7	8,15	3,70
1,70	218	168	132,0	80,3	49,8	22,4	14,7	8,10	3,65
1,75	204	159	126,0	77,6	47,1	21,8	14,4	8,05	3,63
1,80	190	149	118,0	75,0	46,3	20,7	14,1	8,00	3,61

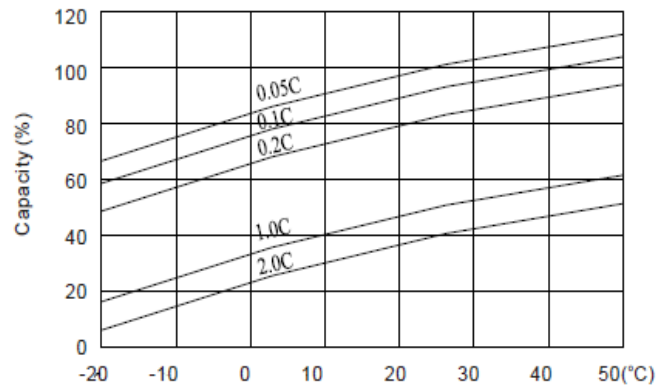
Discharge power (W/25°C, 68°F):

End Voltage	5min	10min	15min	30min	1h	2h	3h	5h	10h
1,60	433	323	258	165	98,6	56,5	42,5	27,9	16,1
1,65	420	310	250	157	97,8	55,3	41,1	27,4	15,7
1,70	390	299	246	151	93,8	53,7	40,4	27,0	15,4
1,75	368	287	232	149	92,3	53,0	39,9	26,8	15,1
1,80	349	275	218	146	88,5	51,4	39,0	26,4	14,8

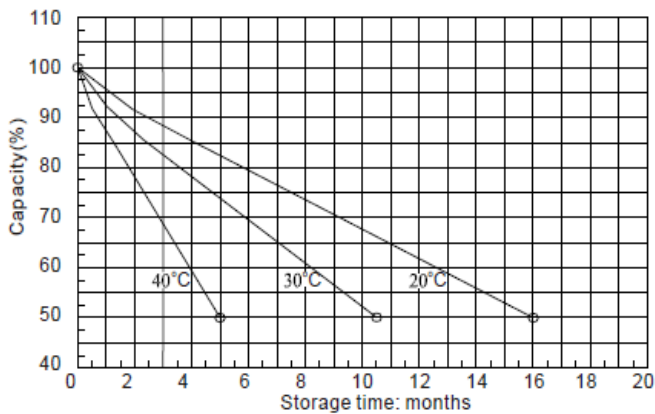
Discharge curves



Temperature and capacity relation



Selfdischarge at different temperature



Constant voltage charge characteristic

